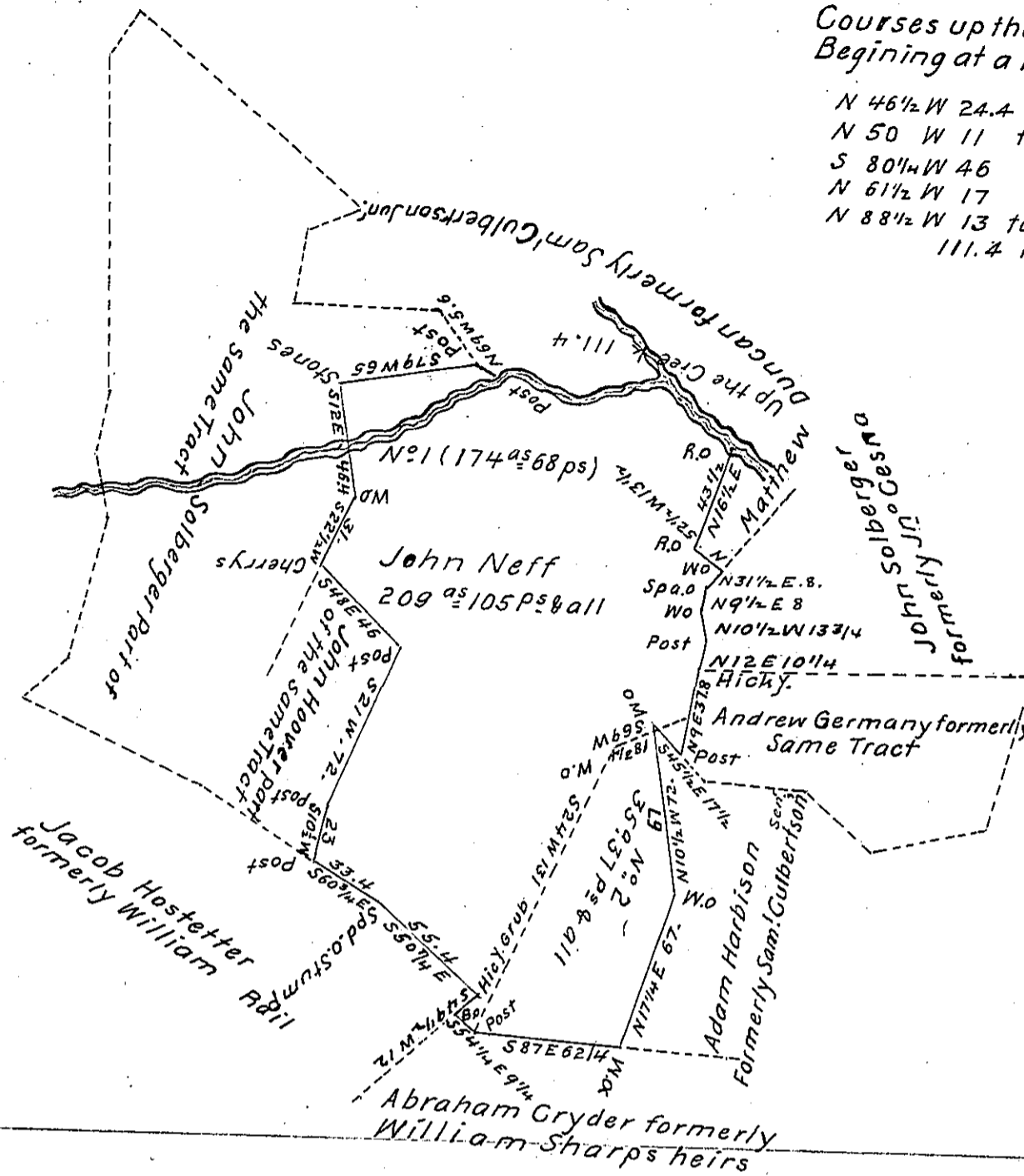


Courses up the Creek
Beginning at a Red oak

- N 46 1/2 W 24.4
- N 50 W 11 to fork of Creek
- S 80 1/4 W 46
- N 61 1/2 W 17
- N 88 1/2 W 13 to post
111.4 P^s



Draught of part of two Tracts of Land Situate in Letterkenny
Township Franklin County Containing Two hundred and nine
Acres and one hundred and five perches and Allowance of Six P
C^t for Roads - No. 1. Containing One hundred and Seventy four Acres
and Sixty eight perches and allowance Being part of a Tract of
343^a 1/4 & all. Surveyed in pursuance of a Warrant Granted John
Gulbertson for 300^a Dated the 4th day of May 1785 No 2 Containing
Thirty five Acres and thirty seven perches & allowance Being part of
a Tract of 81^a 110 P^s & allowance Surveyed in pursuance of a Warrant
Granted John Neff for 82^a Dated the 7th day of December 1789.
Resurveyed and laid off from the other parts the 15th & 16th of April 1817

Rich^d T. Leech Esq^r

Arch^d Fleming D.S.

Surveyor General

IN TESTIMONY that the above is a copy of the original remaining on file in
the Department of Internal Affairs of Pennsylvania, made
conformably to an Act of Assembly approved the 16th day of
February, 1833, I have hereunto set my Hand and caused
the Seal of said Department to be affixed at Harrisburg,
this fourteenth day of June 1904.

Isaac R. Brown
Secretary of Internal Affairs.